

**COVID-19  
Operational Best  
Practice Sharing Forum**  
Thursday, April 9 | 3:00PM EST



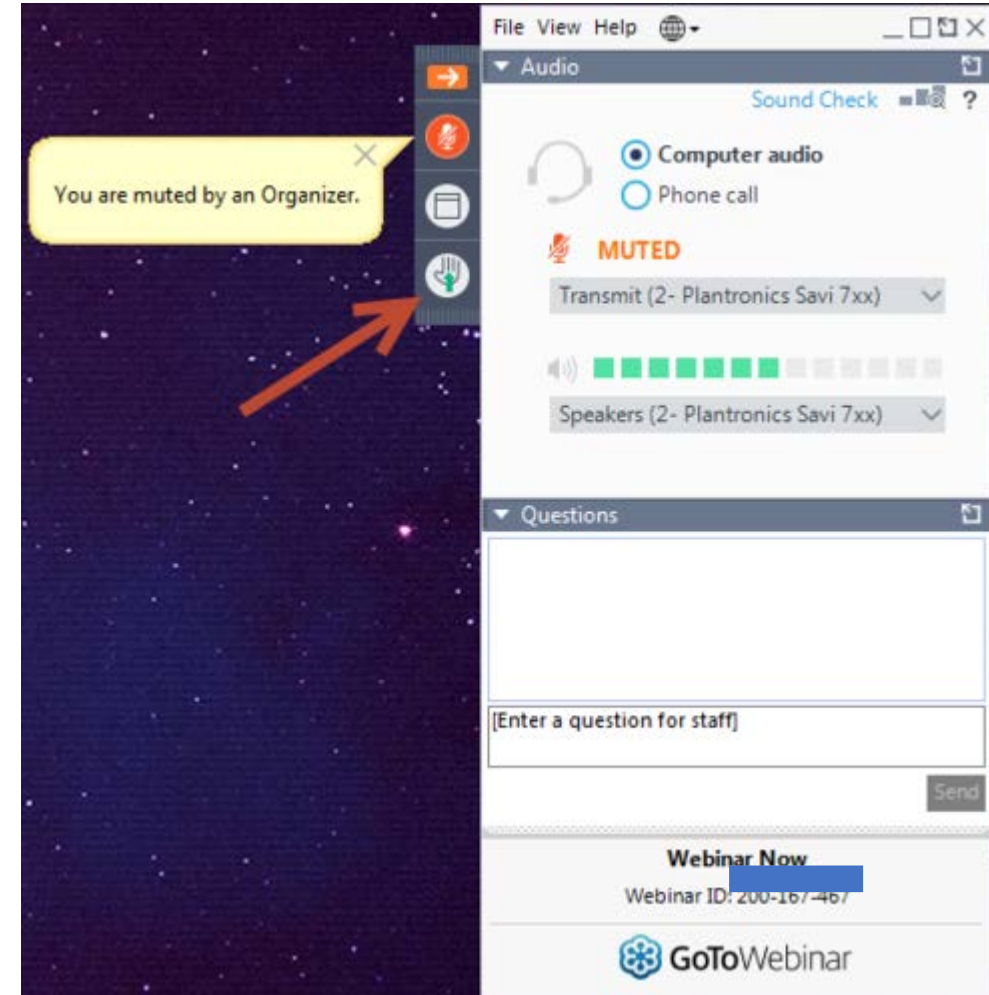
**Moderated by:**

**Joe Dettinger**  
Senior Director, Compliance &  
Stewardship, SOCMA

**Emylyn Noma**  
Senior Manager, Compliance &  
Stewardship, SOCMA

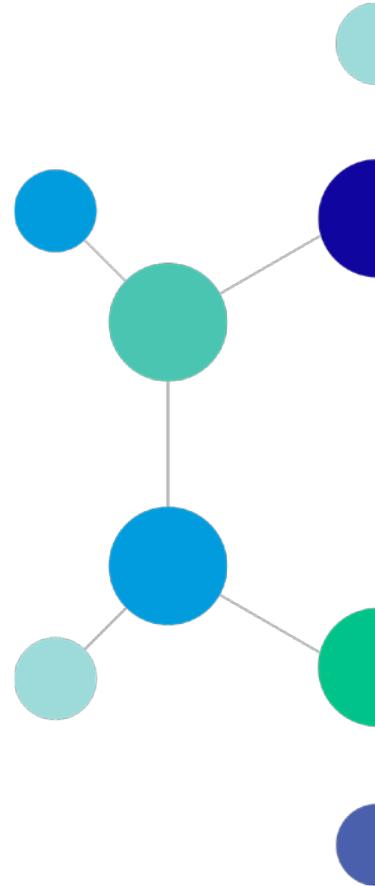
# Open Discussion

- We will open microphones for discussion through out the forum.
- If you would like to share or ask a question to the group verbally, please click the “raise hand” icon or type into the questions box “unmute me.” Otherwise, please type it into the chat box.
- Please wait 5 seconds after you hear the “your line has been unmuted” before speaking.



# Today's Goal

- SOCMA to share what we are hearing from the industry and promote the interactive sharing of current practices being utilized to keep plants running
- This is an open discussion forum and attendee participation is highly encouraged



# Current State of Operation



## Notes:

- No members report a facility shutdown or closure
- Under utilized due to economy slowing and due to limited staffing
- Some locations are over utilized and working to divert production to other sites

# Business Strain



## Other issues:

- Operational Restrictions
- Economy Slowing
- Limited Staff

What other issues are you seeing at your facility?

# PPE Inventory

- Majority of members have 2-3 months worth of PPE supply
- Some are critically low on PPE with < 1 month of supply
  - Gloves
  - Face Mask
  - Face Shields
  - N95 Respirators

Are there other supplies shortages that you are seeing?

# PPE Procurement & Supply

- 32% of PPE orders were cancelled or delayed
- Suppliers prioritize orders for healthcare facilities
- Redirecting 50% of PPE inventory to government or hospital facility
  - PA Executive Order (04/08/20)
  - Other states
- Provision of masks and other non-critical PPE to manufacturing employees are not required unless mandated as regulatory requirement

PPE Order Delay

# PPE Use & Reuse

50% of the responses are considering/implementing extended use of PPE

- Reuse N95 mask using 75% IPA solution
- Rationing PPE supply
- Use of DIY mask and face shield for non-critical use
- Decontamination and reuse of hazmat suits

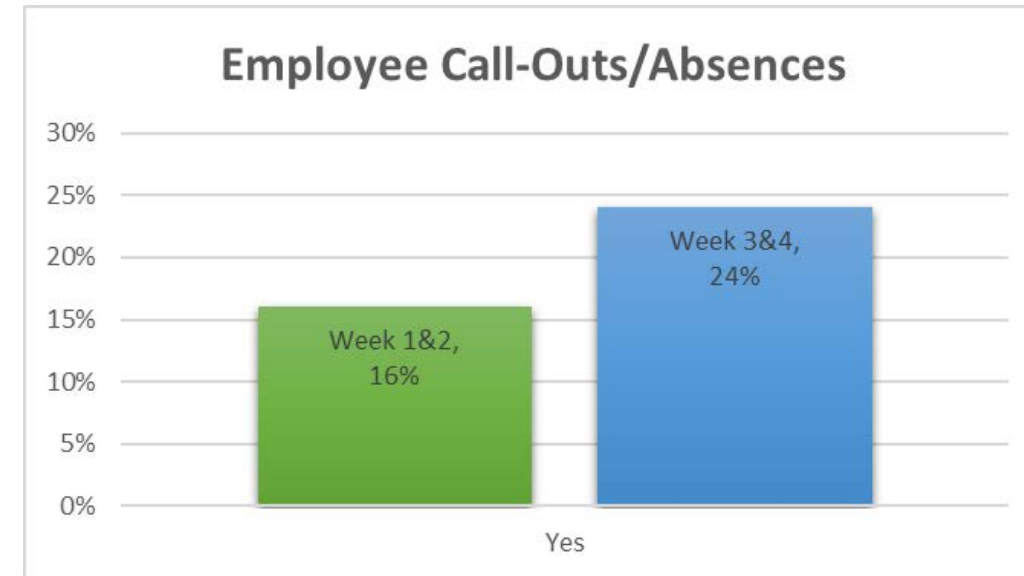


Any other ideas to share for reusing PPEs?



# Addressing Surge in Employee Call-Outs/Absences

- Flexible work schedule/work from home option for non-essential employees
- Staggered schedule to limit face-face exposures
- Provide additional benefits/compensation for essential workers:
  - Weekly bonus for hourly employees
  - Attendance bonus
  - Increased overtime rate
  - Up to 120 hrs. sick leave
  - Additional resources like free meals, gift cards, food delivery



# Plan of Action In Case of Exposure to COVID-19

## STAFF

- ✓ **14-day quarantine period is a must**
  - Develop a checklist to risk rank interactions
- ✓ **Contact tracing**
  - Interview questionnaire
  - Attendance log review
- ✓ **Return To Work Protocol**
  - Majority of members rely on issued medical clearance
  - Some developed their own RTW questionnaire to validate if employee should return to work
  - State and Federal issued guidance and policies for returning workers exposed to COVID-19

Contact Tracing

# Plan of Action in Case of Exposure to COVID-19



## PLANT

- ✓ **Shut-Down protocol**
  - Shut down entire facility
  - Secure affected area and continue operation on unaffected area
  
- ✓ **Return To Operate protocol**
  - Keep area confined for additional 24hrs after disinfection
  - Some will keep the area closed for at least 3 days after disinfection



# Discussion of other operational related topics.

# SOCMA COVID-19 Resources

<b>COVID-19 Resource Page</b> Daily updates on our <a href="#">COVID-19 Resource Page</a> about event cancellations, resource guides, templates and legislative updates.	<b>Tuesday Townhalls at 1:00pm ET</b> SOCMA will answer any government-related hot topic questions you may have, as well as collectively address inquiries we receive.	<b>Thursday Member Bulletins</b> Industry updates, data and COVID-19 impacts on the specialty and fine chemical value chain.	<b>Friday Webinars at 2:00pm ET</b> Three-week webinar series on business continuity topics such as insurance and supply chain issues.
---	---	---	---

## Follow Up Contact

### **Joe Dettinger**

Sr. Director, Compliance & Stewardship  
[jdettinger@SOCMA.org](mailto:jdettinger@SOCMA.org)  
571.348.5110

### **Emylyn Noma**

Manager, Compliance & Stewardship  
[enoma@SOCMA.org](mailto:enoma@SOCMA.org)  
571.348.5119