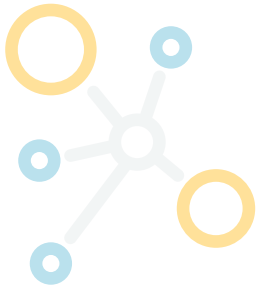




#1

CYBERSECURITY

IN MANUFACTURING



#1

Identify
Vulnerabilities

Protect
Against
Existing
Threats

#2



#3

Leverage
Cyber
Insurance



BASELINE CYBERSECURITY

PATCHES & UPDATES

- Server OS
- Workstation OS
- BIOS
- Firmware
- Applications
- Smart Phones

PRIVILEGED ACCESS

- Enhanced password policies
- User screen timeouts
- Limit users' access

ADVANCED EMAIL FILTERING

ENCRYPTION

- Data at rest - drives, backups
- Data in motion - email

VULNERABILITIES

- Unused RDP, VNC, and other remote access applications

#2

PRIORITY PRACTICES

FIREWALLS

- Next gen. firewalls
- Intrusion detection
- Intrusion prevention
- Log reports to SIEM

SECURITY AWARENESS TRAINING

- Data security
- User screen timeouts
- User access limits

CYBERSECURITY INSURANCE

MULTI-FACTOR AUTHENTICATION

- Office 365
- Google workspace
- Remote access VPN
- Physical workstations
- Servers
- RPD & remote access tools
- Privileged apps & service accounts

ENDPOINT DETECTION & RESPONSE

SEGREGATE BACKUPS

- Offsite & encrypted
- Local encryption on secure VLAN
- Disaster Recovery testing

#3

CALL NOW

RISK ASSESSMENT

USE MANAGED SIEM / SOC SOLUTION

EVALUATE PHYSICAL SECURITY

- Routers, firewalls, switches
- Servers, backup devices
- Enterprise network authentication

*Thank you for joining SOCMA's
Cybersecurity Roundtable!*



Michael Belling
Assistant Vice President

McGriff

P: 205-789-9980 | mbelling@mcgriff.com
2211 7th Avenue South, Birmingham, AL 35233



Matthew Fleming
Client Success/Relationship Development

FitNetworks

P: 704-426-0219 | mfleming@fitnetworks.com
8334 Pineville-Matthews Rd, Charlotte, NC 28226

