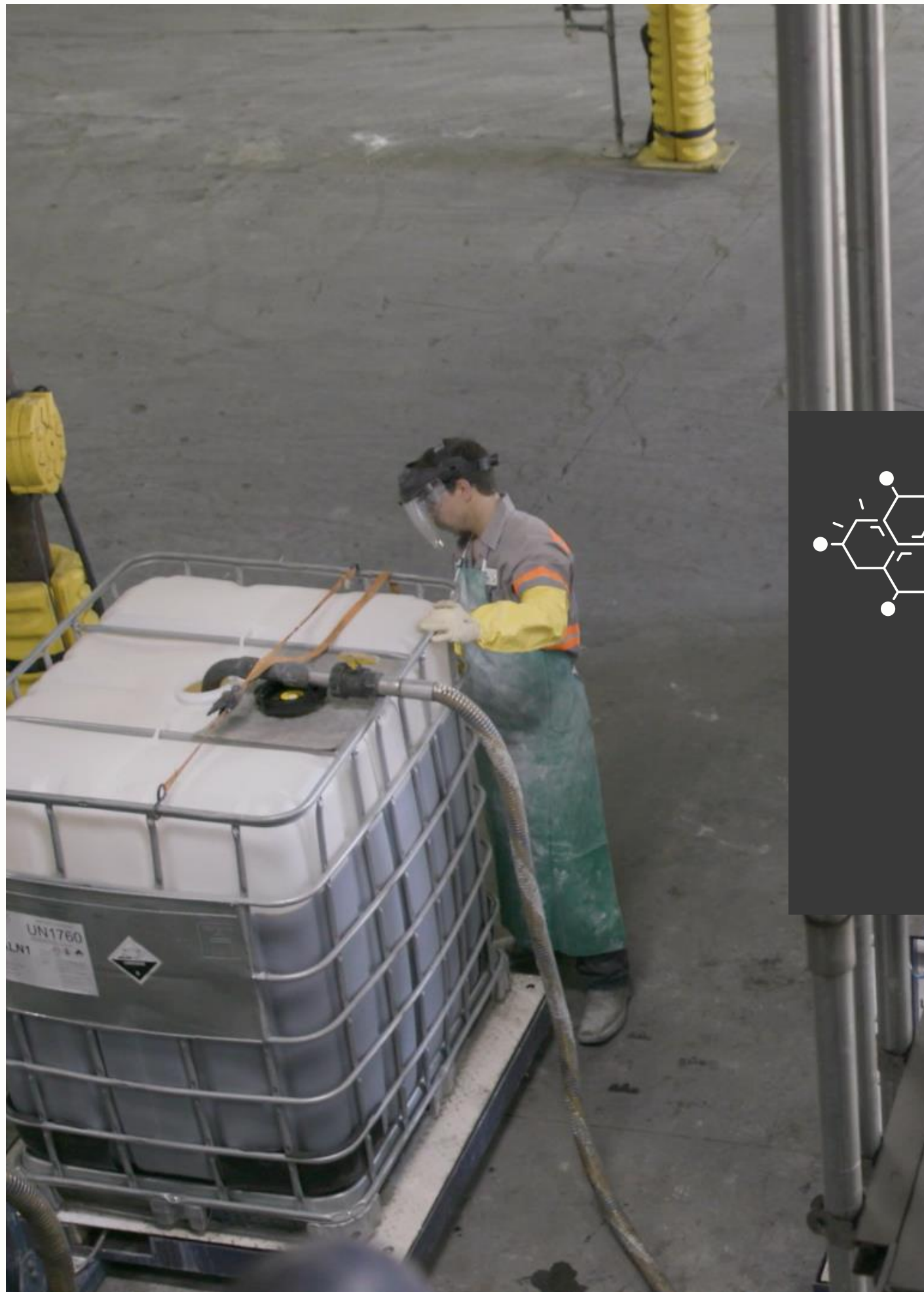




A chemical contract manufacturer and toll blender providing turn-key liquid blending, toll manufacturing and private label packaging services as well as providing last mile delivery.

WWW.GENESISCCB.COM





ABOUT US



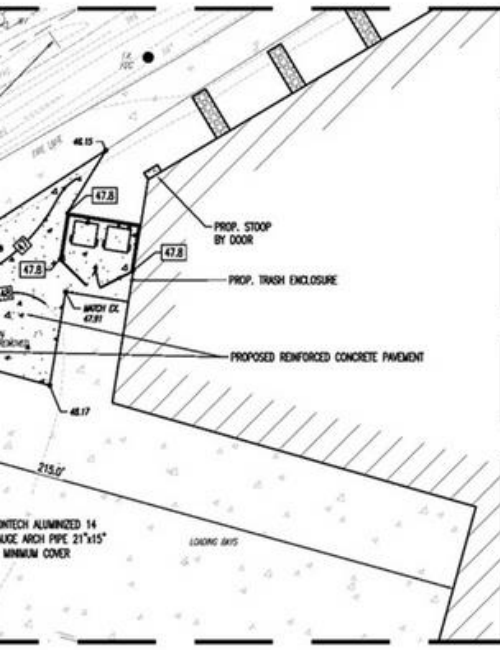
Genesis Custom Chemical Blending provides responsive, full-service toll processing and blending capabilities for companies nationwide. Our proven processes, expert team and specialized equipment afford us the ability to produce custom chemical formulas quickly and affordably. Supporting small- and large-batch needs, we offer full production, and packaging and delivery services.



LOCATION ENNIS, TX

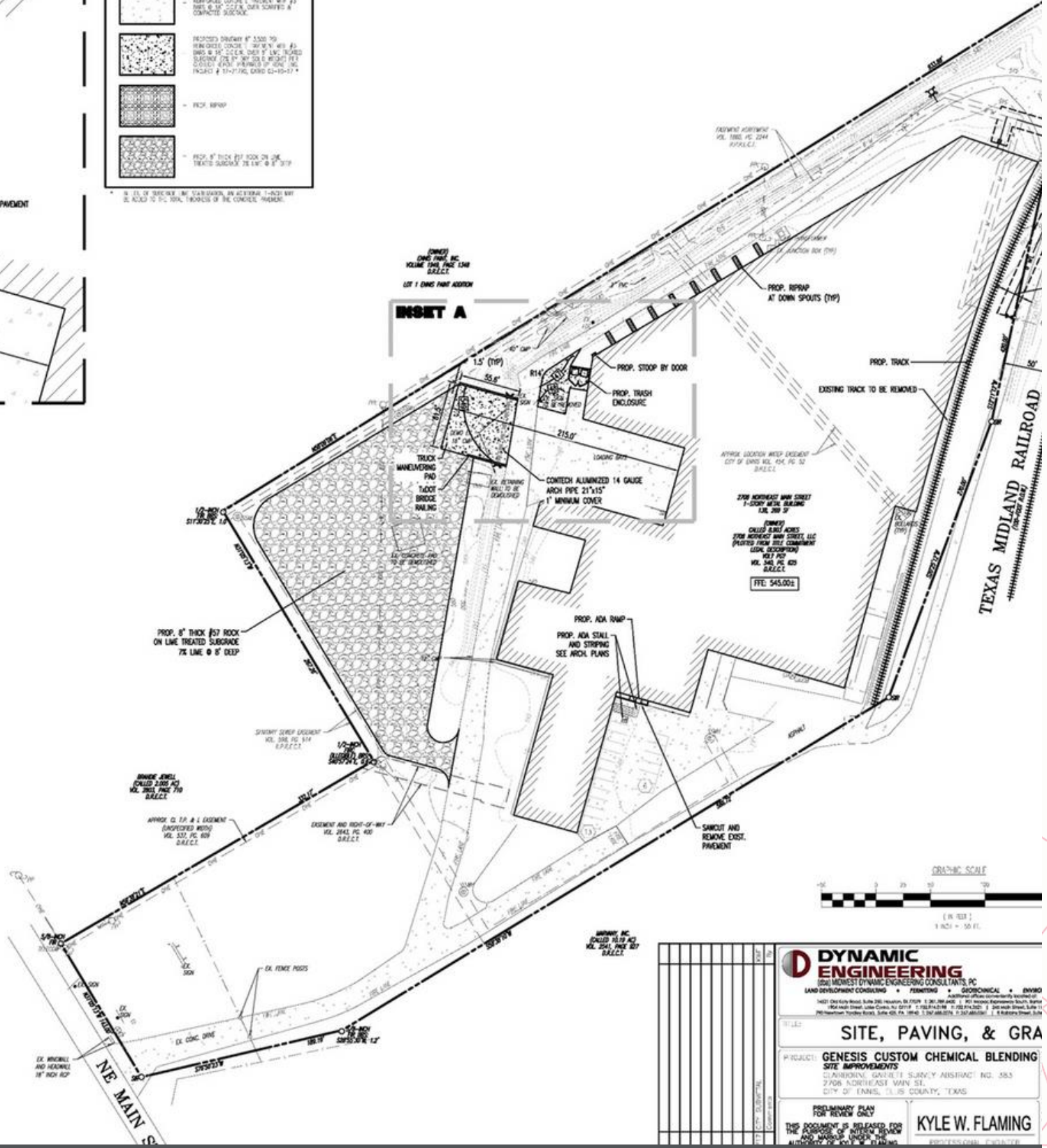
**Manufacturing Location:
2708 NE Main St
Ennis, TX 75119**

**35 Miles South of Downtown Dallas
Easy access to I-45 & I-20**



PAVING LEGEND

	PROPOSED DRIVEWAY 4" 5500 PSI REINFORCED CONCRETE 1" MINIMUM COVER WITH 4# 12" ON 18" GRID. OVER SURFACE & COMPACTED SUBGRADE.
	PROPOSED DRIVEWAY 4" 5500 PSI REINFORCED CONCRETE 1" MINIMUM COVER WITH 4# 12" ON 18" GRID. OVER SURFACE & COMPACTED SUBGRADE. WITH 4" 5500 PSI REINFORCED CONCRETE 1" MINIMUM COVER WITH 4# 12" ON 18" GRID. OVER SURFACE & COMPACTED SUBGRADE.
	PROP. BITTOP
	PROP. 8" THICK BIT TOP ON 2" TREATED SUBGRADE 24" MIN. 8" X 24"



DYNAMIC ENGINEERING
CONSULTANTS, INC.
 LAND DEVELOPMENT CONSULTING • PERMITTING • GEOTECHNICAL • ENVIRONMENTAL
 1402 East Main Street, Suite 200, Houston, TX 77002 • P: 281.486.4444 • F: 281.486.4445
 2708 North Loop West, Suite 200, Houston, TX 77009 • P: 281.486.4444 • F: 281.486.4445

SITE, PAVING, & GRADING

PROJECT: GENESIS CUSTOM CHEMICAL BLENDING SITE IMPROVEMENTS
 CLARIBONNE, GARRETT SURVEY ABSTRACT NO. 585
 2708 NORTH LOOP WEST, WARDEN, SE.
 CITY OF ENNIS, TARRANT COUNTY, TEXAS

PRELIMINARY PLAN FOR REVIEW ONLY
 THE ACCURACY OF INFORMATION AND DIMENSIONS IS NOT GUARANTEED

KYLE W. FLAMING
REGISTERED PROFESSIONAL ENGINEER
 LICENSE NO. 10567

FACILITY OVERVIEW

143,600 Square Foot Facility
19 Acres
2+ acre trailer lot
Union Pacific Railcar spur
H2 Flammable Room



INDUSTRIES SERVED

OIL & GAS

- Completions
- Frac
- Coiled Tubing
- Production
- Pipeline

CONSTRUCTION

- Asphalt Additives
- Lubricant
- Lubricant Additives

PULP & PAPER

- Coatings

HOUSEHOLD, INDUSTRIAL, INSTITUTIONAL

- Disinfectants
- Cleaners

WATER TREATMENT

- Wastewater
Municipalities
- Oil & Gas

AGRICULTURE

- Micronutrients
- Crop Protection
- Fertilizer



SAFETY

Genesis Custom Chemical Blending is committed to the health and safety of our employees, contractors, customers and neighbors as well as the security of our products, facilities and environment. We are dedicated to achieving best practices throughout all business activities based on continuous improvement and a commitment from all levels within our organization.

In addition to maintaining regulatory compliance, we invest in the health and safety of our employees and environment through waste control programs, air quality monitoring, wastewater management, containment features, process improvement, and continual education.





MANUFACTURING FACILITY OVERVIEW

We follow a high standard of operational procedures, including quality and safety measures, throughout the entire process. Because your chemical solution is customized for your company, you can have peace of mind knowing it will meet your specific business needs.

Types of Blends

- Water-Based Chemistries
- Oil-Based Chemistries
- Endothermic
- Exothermic
- High Shear
- Flammable

Capabilities

- EPA Registered Facility
- Private Labeling
- Toll & Turnkey Blending
- Customer Inventory Reporting
- Strategic Sourcing Relationships

CAPABILITIES EQUIPMENT

WATER BASED / HIGH FLASHPOINT BLENDING

- (2) 304 Stainless Steel Mix Tanks on Load Cells with Agitation, Recirculation, and Eductor Systems
 - 5,500 Gallon Tank Capacity
 - M1-1 Tank is used for High Solids mixing
 - M1-2 Tank has Heating / Cooling coils for endothermic and exothermic reactions
- Reverse-Osmosis + Water Deionizing system with 10,000 Gal storage tank.
- (3) HDPE Storage Tanks
 - 10,500 Gallon Tank Capacity
 - Level-sensing telemetry systems
 - Local and remote level displays and motor start/stops
 - 10HP 2"x3" 1800 RPM centrifugal load-out pumps (~200 GPM)
- (2) 100-ton York Chillers
- 3,000 Gallon hot water tank
 - Fiberglass construction with foam insulation
 - Variable thermostat, temperatures up to 210F
 - Centrifugal recirculation pump



CAPABILITIES EQUIPMENT

H2 FLAMMABLE BLENDING ROOM

- Class I DIV I Electrical
- M2-1 Mix Tank
 - Carbon Steel for oil-based blends
 - Epoxy Lined
 - 5,200 Gallon Tank Capacity
- M2-2 Mix Tank
 - 304 Stainless Steel
 - 6,500 Gallon Tank Capacity
- M2-3 Mix Tank
 - 304 Stainless Steel
 - 2,500 Gallon Tank Capacity
 - Insulated and Jacketed for endothermic and exothermic reactions
- Pilot Tank
 - 304 Stainless Steel
 - 500 Gallon Tank Capacity
- All tanks are on Load Cells with Agitation, Centrifugal Recirculation Pumps, and Eductor System



CAPABILITIES EQUIPMENT

H2 FLAMMABLE BLENDING ROOM

- DFC
 - Zeeco Direct Fire Combustor – 30' height / Model# VCU-3.5-30
 - Vapor streams from operations containing high levels of VOCs are routed to the DFC for destruction.
 - The DFC drastically reduces emissions from blending and transferring processes, ensuring regulatory compliance and minimizing Genesis' environmental impact.
 - Directing emissions away from process areas greatly improves employee safety and ensures operational continuity.
- VRU
 - VaporTech SST-20 dual stack vapor scrubber system
 - Twin liquid beds and media-filled columns allow for both acidic and caustic neutralization of vapors from blending and packaging operations.
 - NOVAC Carbon Bed with potassium iodide-impregnated activation carbon further polishes vapor streams containing glutaraldehyde.



QUALITY MANAGEMENT SYSTEM

1) Required Personal Protection Equipment



- Goggles / Face shield
- Nitrile gloves
- Apron and Yellow Tyvek Sleeves

2) Equipment Required for Filling

- Filling hose / Safety straps
- New 330 gal wirecage tote
- Tote (platform) scale
- Torque wrench / tote lid tightener

3) Labels for the Transport Container

- GHS-Compliant Information label (1)
- "Filled-By" label (date / sequential tote #)



Filled By: _____
 Date: _____
 Tote #: _____

4) Method for Production

- Locate nearest eyewash/shower station in case of emergency.
- Use only new-bottle 330-gal wirecage totes as listed on the fill ticket.
- Label totes completely before beginning the filling process (see Section 3 above).
- Verify that all hoses, pumps, and other equipment are cleaned or dedicated and pull a fill sample for the Lab. The lab will provide the fill weight based on product density.
- Set up platform scale at designated tank. Place tote on scale and "zero out" display.
- Make sure the bottom valve on the totes are closed and capped.
- Use a long PVC filling rod to keep product flow under liquid level to prevent foaming.
- Fill containers to desired weight as specified on the f-ticket.
- Set the torque wrench to the correct ft-lbs and use the 6" lid tightener to tighten the tote lid to the manufacturer's closure specifications.



- 2in. bung caps should be sealed by the manufacturer and not require adjustment.
- Tote, lid, and cage should be free from deep cuts, cracks, grit, and damage.
- Lid closure torque specification should be found near UN information (Mauser totes = 70 ft-lbs)
- Bottom outlet valve is closed, zip-tied, and capped with screw-on cover.



As a fundamental value at Genesis, quality and consistency are matters of utmost priority in our daily operations.

Our Quality Management System is comprised of detailed Standard Operating Procedures that direct our activities and document our critical control point verifications, as well as "hard-stop" product release procedures in our ERP system.

Our SOPs provide exhaustive instructions for all facility operations, including:

- Raw material and supplier qualification and testing
- In process and finished good quality control procedures
- Retain storage and lot number traceability
- Two-person raw material code and weight verifications
- Tank cleaning and validation processes
- Product segregation
- Documented equipment operation processes
- Packaging, labeling, and closure methods
- Record maintenance and retention

All with the goal of delivering an exceptional finished product to our customer.

LABORATORY SERVICES

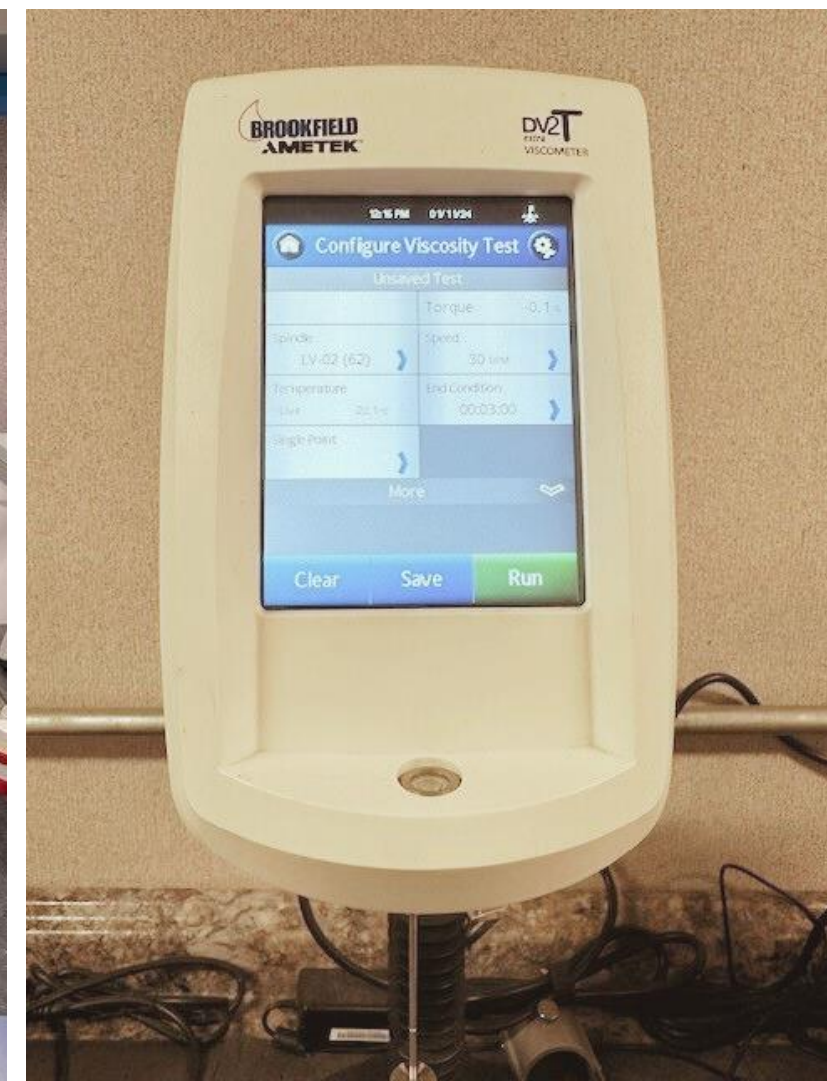
QA/QC Laboratory

Genesis has a full-service QC laboratory to ensure every blend meets customer specifications.

- Retain Sample Storage
- Quality Control Testing such as:
 - Specific Gravity
 - pH
 - Titrations
- Water Analysis
- Surfactant Testing
- Lot # Traceability
- Refractometry
- UV/VIS Spectroscopy
- ATP Kill Studies
- APB Serial Dilution

Testing Equipment

- ICP-MS and ICP-OES
- Thermo FTIR
- XRF
- Krüss K100 Tensiometer
- Krüss DSA 25 Optical Tensiometer
- Grace M3600 Ambient Viscometers
- Grace M5600 HPHT Viscometers
- Brookfield DV2-T Extra Viscometer
- Anton Paar MCR 302e Rheometer
- Hach DR3900 UV/VIS Spectrophotometer
- Anton Paar TAG 4 Flashpoint Tester
- LS 13 320 Particle Size Analyzer
- Mettler Toledo Moisture Analyzer
- Ofite Lubricity Tester
- Silverson High Shear Mixers
- Grace M9250 Flow Loop
- Anton Paar Alcohol Hydrometer
- GC/MS
- Hanna Potentiometric Autotitrator





LAST MILE LOGISTICS

We transport, deliver and handle a variety of chemical products across the U.S.

We partner with you for more than transportation — we help you form a strategy. The chemical industry is our focus and specialty, so we use our know-how to build a system for your raw material intermediate hauling, finished goods transportation to the yard, and last-mile delivery to location

Our Training Includes:
Hazardous Materials General Awareness
Function Specific Tasks & Security
Driver Qualification & Disqualification
Standards
Hours of Service & Equipment
Inspections
Smith System Safe Driver Certification
PEC Safeland Certification

Our Fleet Includes:
45 Trucks
65 ISOtainers with
Telemetry
25 Flatbeds
28 Vacuum Trailers
12 Stainless Steel Tankers





GENESIS TEAM

Corey Conkle – VP Operations
(713) 396-6565

Matthew Fuston- Business Development
(806) 252-0462





Jill Howard – Business Development
(469) 337-7007

DeWitt Knox - Lab Manager
(214) 676-4164

Mike Taylor - EH&S Compliance Manager
(817) 980-9473

CONTACT US

At Genesis Custom Chemical Blending, we provide custom chemical solutions that help you provide a substantial return on your investment and outperform the competition.

-  (682) 701-8646
-  2708 NE Main St. Ennis, TX 75119
-  www.genesisccb.com
-  Genesis Custom Chemical Blending

