



InChem

**INCHEM ROCK HILL, LLC**

**RESPONSIVE. TRANSPARENT. FLEXIBLE.**

**CHEMICAL TOLL MANUFACTURING SERVICES**



Connections for the Specialty & Custom Chemical Industry

# Chemical Toll Manufacturing

## Experts

### **1 Operational Excellence in Safety**

Over 3,400 days without a lost work-day incident

### **2 100% Tolling**

InChem does not sell any products of our own. We do not compete with our customers

All customer IP is held in strict confidence

All process improvements belong to the customer

### **3 Responsive. Transparent. Flexible.**

Inquiries will be responded to quickly by experienced professionals with decades of experience in the tolling industry

InChem is committed to transparency with customers. All batch sheets, lab reports, reactor data belongs to the customer



## Health and Safety

A workplace culture that emphasizes safe work practices are an *investment*, not a cost

Approaching 10 years without a lost work day incident.



# Regulatory & Organizations



## **ISO 9001: 2015**

InChem's quality management system has been fully audited by DQS. Part of our quality system is a commitment to continuous improvement.



## **FIFRA Registered**

InChem maintains a FIFRA registration which allows us to produce pesticides, biocides, etc.



## **Ecovadis**

InChem has a committed rating from Ecovadis for our environmental, sustainability, and governance practices.



## **SOCMA Members**

InChem is a proud SOCMA member.

# Logistics



## **Well positioned to make logistics easy**

- Located off exit 82 on I-77
- 30 minutes south of the Charlotte International airport
- 3 hours to port of Charleston
- 2 hours to the inland port in Greer, SC



## Expertise

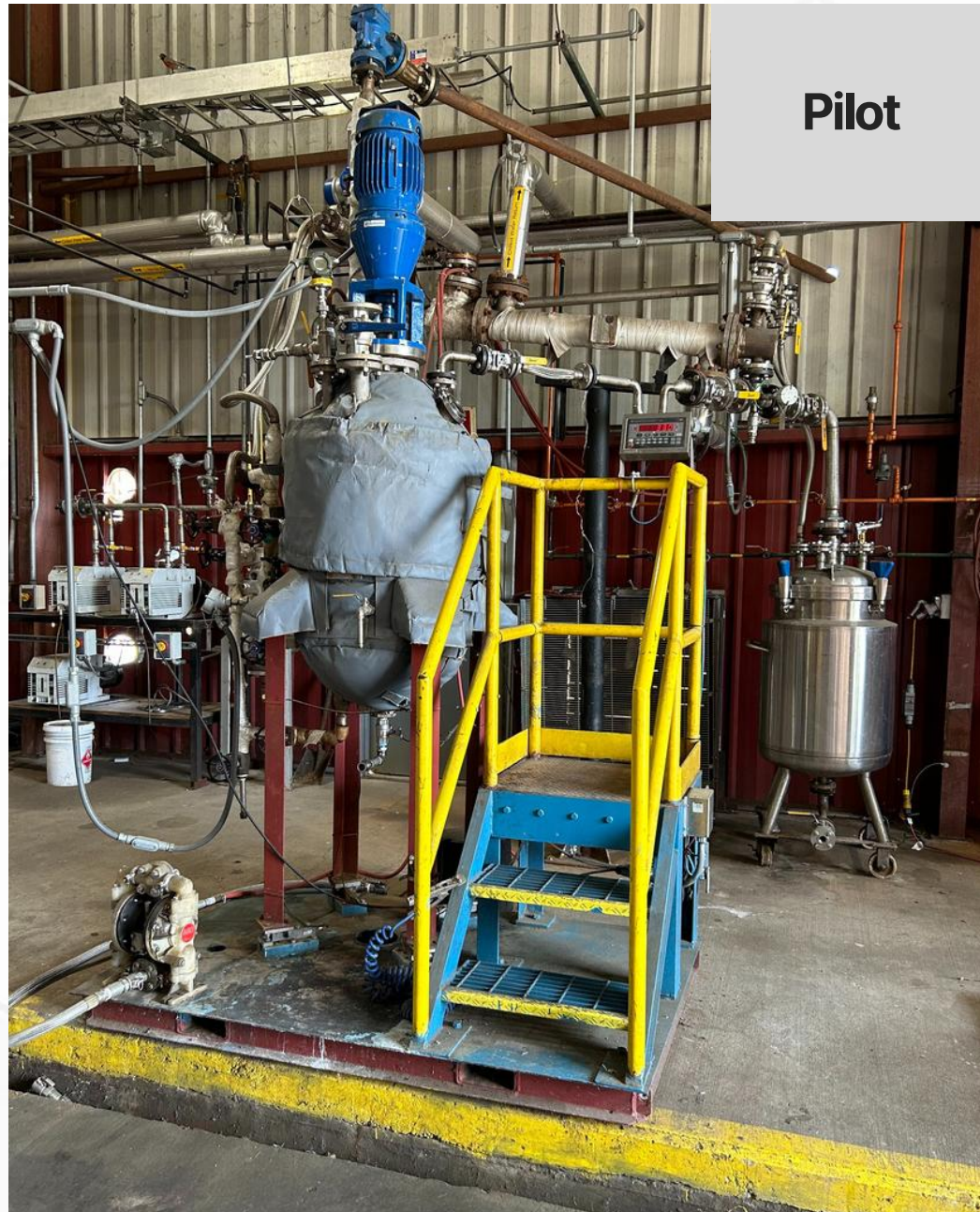
**InChem's Technical and Operations Teams have extensive experience with the following chemistries**

- Epoxies
- Alkyds
- Urethanes
- Polyesters
- Condensation reactions
- Esterification reactions
- Transesterification reactions

## **Our Customers Service Many Different Markets**

- Coatings
- Adhesives
- Automotive
- Aerospace
- Construction
- Agricultural
- 3d Printing
- Inks

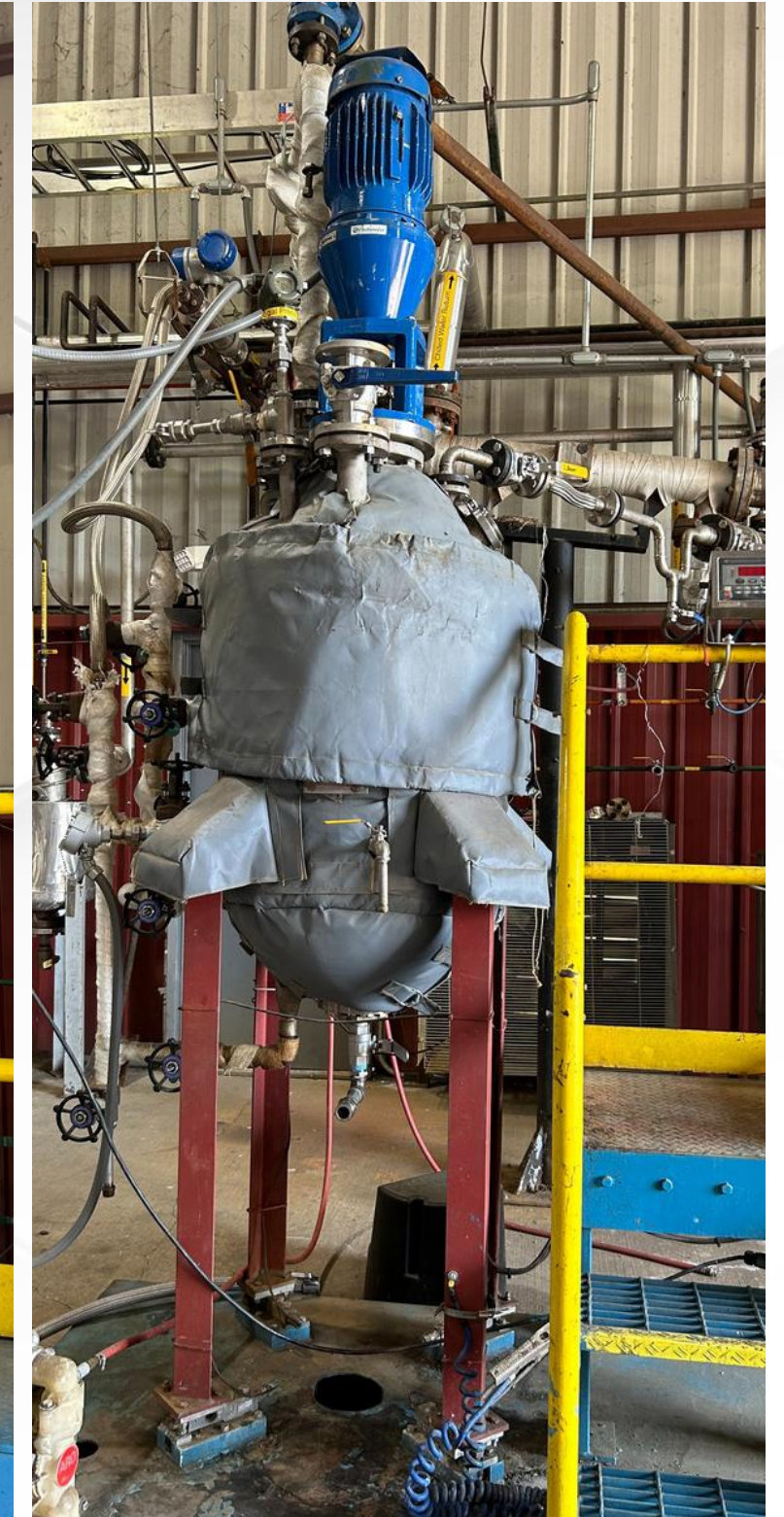
# General Manufacturing Capabilities



## Pilot Scale Production

### Scale your product from lab to commercialization

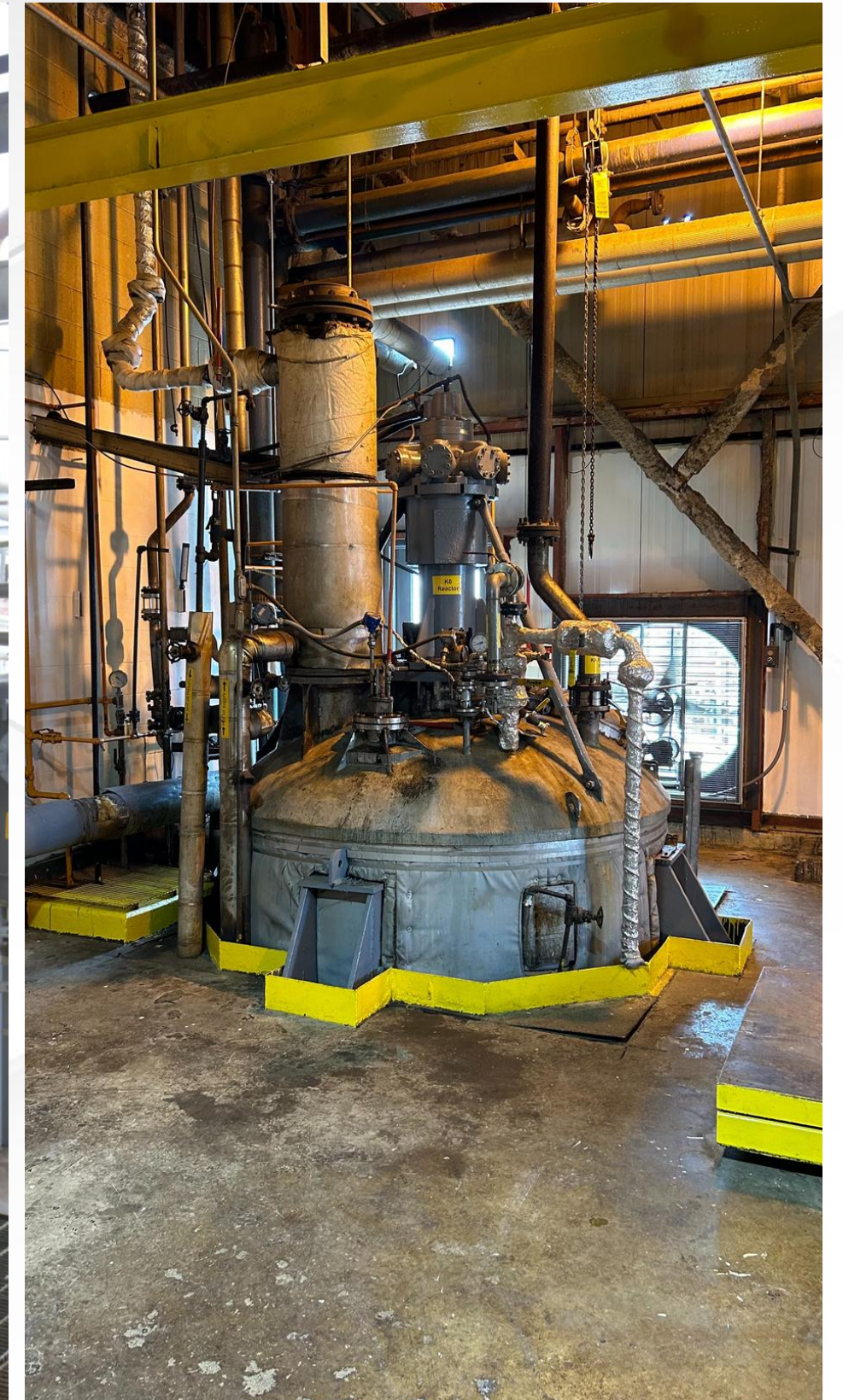
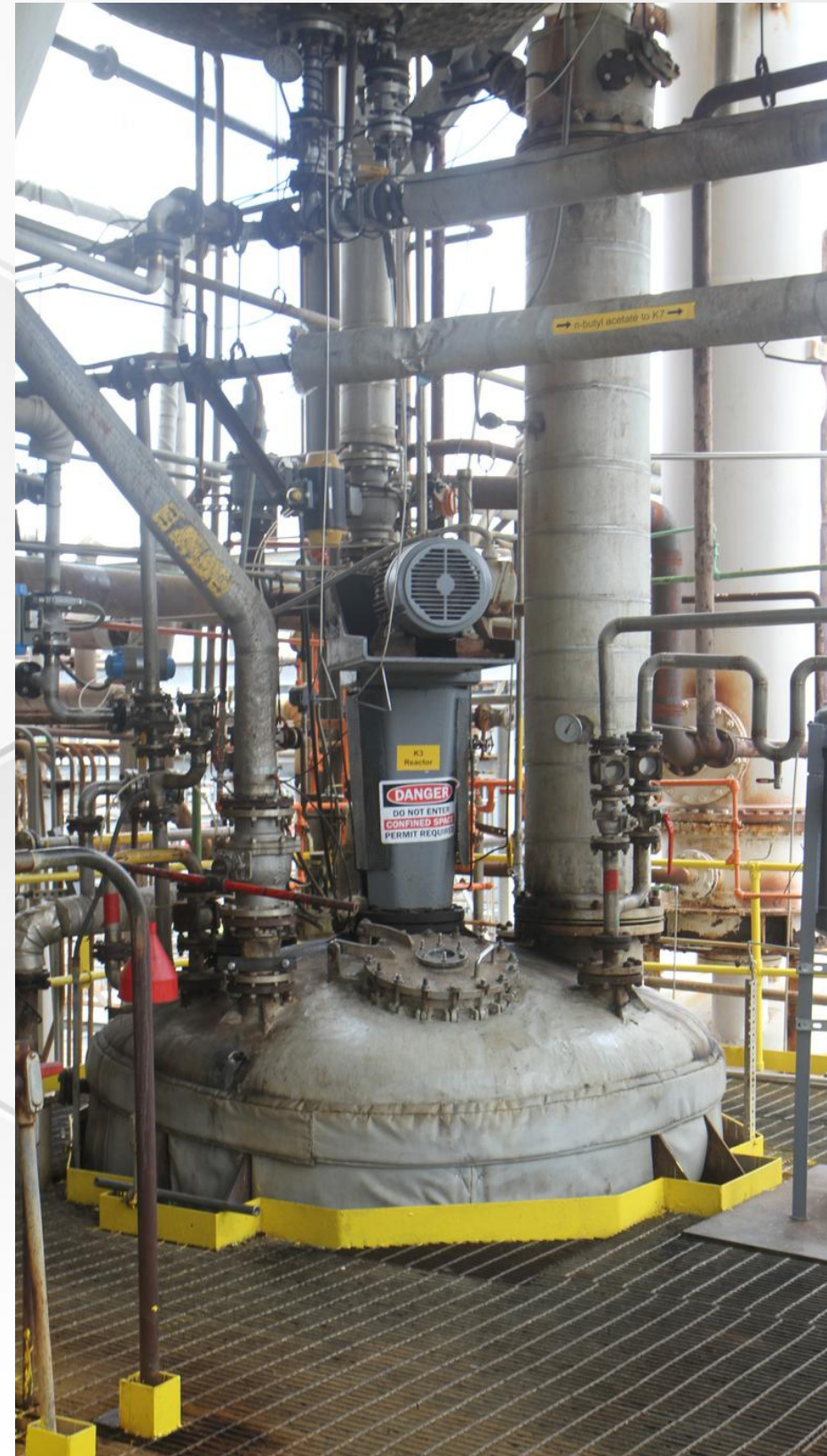
- 2 reactors are available for use.
- Modular design allows us to switch the reactors out
- Pilot plant projects are managed by a Ph. D chemist with an extensive history of successful scale-up and commercialization's.
- Reactors have PLC and data historian capability
- Following pilot trials, InChem's technical team will create a batch summary of what occurred during the process and what can be done to ensure successful commercialization.
- 30-gal and 50-gal reactors available.



# Commercial Batch Reactions

## Commercial batch production from 250-gal to 6,000 gal

- 8 reactors ranging from 1,800 to 6,000 gallons
- Primarily 316ss metallurgy
- Temperature capability up to 285C
- Pressure capability up to 75PSIg
- Vacuum capability to 28 InHg
- All reactors have overheads for full take-off or reflux
- High viscosity mixing capability



# Wiped Film Distillation

## Purify materials without thermal degradation

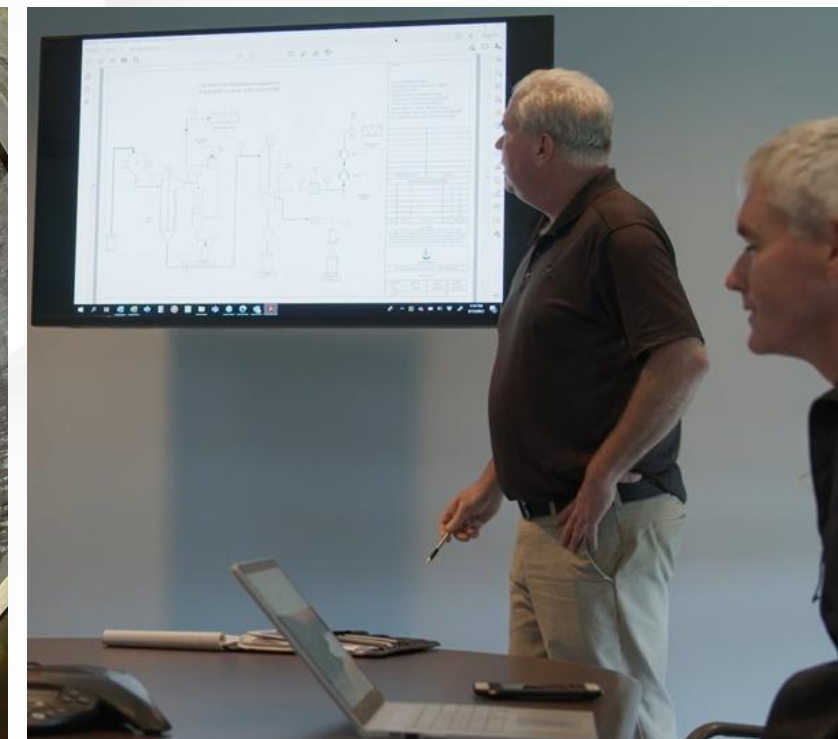
- Pilot and commercial units available
- 316ss metallurgy
- Temperature capacity to 295C
- Vacuum capability as low as 0.05mBar
- Appropriate for low viscosity materials <12,000 cps
- Pilot unit will process approximately 1 drum per day
- commercial unit will process approximately 1 drum per hour (180 - 350kgs/hr)



# New Product Introduction

## Turning customer requirements into deliverables

- Structured process to determine ALL customer requirements.
- Packaging fill size, label location, sample size, sample and product ship to addresses, etc.
- Complete all the paperwork prior to beginning a batch
- Streamlines logistics, shipment, and billing
- Designed to EXCEED customer expectations
- Includes post-production follow up to review the process for any potential process improvements



# Inventory Management

## Accurate Information Provided in a Timely Manner

- Clean, organized, and well maintained warehouse
- Inventory management system designed specifically for handling similar raw materials from multiple customers
- Lb for lb tracking from receipt until shipment of finished goods
- FIFO inventory control
- 70,000 sq ft of warehousing for raw materials and finished goods





InChem

**INCHEM ROCK HILL, LLC**

**RESPONSIVE. TRANSPARENT. FLEXIBLE.**

**CHEMICAL TOLL MANUFACTURING SERVICES**

**COME AND SEE US AT:**

**BOOTH # 209**

or

Online at

**[www.InChemcorp.com](http://www.InChemcorp.com)**