

Welcome to  
Optima  
Chemical  
Group, LLC





## Who We Are

- Privately owned with solid financial resources (i.e., self-sufficient for capital needs)
- Two Companies/Production Sites: Optima Chemical - Douglas, GA  
Optima Belle - Belle, WV
- Manufacturing operations began 1990 in Douglas, GA
- ~ 130 Employees Total
- ISO 9001 Certified at both locations
- Diverse Sales revenue from Optima products, custom, and toll manufacturing

A global supplier of specialty chemicals,  
toll and custom manufacturing services.





## Industries Supported

- Pharmaceutical
- Catalysts
- Polymers
- Energy
- Electronics
- Animal Health
- Biomaterials
- Personal Care

A global supplier of specialty chemicals,  
toll and custom manufacturing services.





## Pharmaceutical

- Provided early intermediates and reagents for over 25 years.
- Historical focus on organometallic reagents with recent growth to one of largest Boronic Acid suppliers to the industry.
- Supplying downstream custom intermediates and custom reagents from grams to multi-metric tons.
- Custom/toll manufacturing services includes registered starting materials (RSMs) and nutritional intermediates.



A global supplier of specialty chemicals,  
toll and custom manufacturing services.





# Catalyst Services & Products

Offer broad range of services and products including toll manufacturing, intermediates, reagents, ligands and custom manufacturing

## Types of Catalyst

- Heterogeneous
- Homogenous
- Enzymes & Biocatalysts

## Application areas

- Petroleum Refinery
- Petrochemicals & Polymers
- Fine Chemicals (including Pharma)
- Environmental (emission control)

## Chemical Type

- Metal
- Zeolite
- Friedel-Crafts
- Metallocene
- Organometallic
- Acid Base
- Enzyme (including fermentation)

A global supplier of specialty chemicals,  
toll and custom manufacturing services.





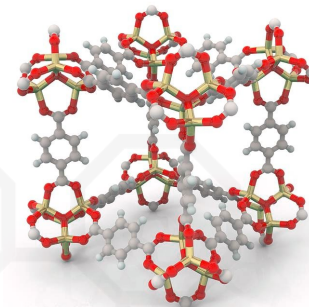
# Adsorbents

## Adsorbent Technologies:

- Activated Zeolites, MOFs, Polymeric, Graphene, and Biomass

## Applications & Industries:

- Environmental: Air & water purification, ground & soil remediation
- Petroleum & Chemical: Gas refining, processing/separations, drying
- Medical: Drug delivery, oxygen concentration, fluids separation
- New Markets/Applications: Energy storage, carbon capture, waste recycling



A global supplier of specialty chemicals,  
toll and custom manufacturing services.





## Energy Storage

- Working from established players in the consumer market to entrepreneurs & start-ups with new technologies addressing the global shift to renewable energy.
- Focused on cathode material development and production for consumer and EV markets that utilize our capabilities to handle metals, like Lithium, Nickel, and Cobalt from pilot to commercial scale.
- Growth in anode materials using our experience and technologies with organosilanes through to polymerizations



A global supplier of specialty chemicals,  
toll and custom manufacturing services.





## Polymers & Additives

- Reactive polymerizations  
(Condensation, radical & anionic)
- Recovery & generation services for  
resins – washing, isolation, & drying
- Custom mfg. of various polymer  
additives used across multiple  
industries



A global supplier of specialty chemicals,  
toll and custom manufacturing services.





## Processes & Chemistries

- Organometallic Reactions – (Li, Mg, Na, K)
- Hydrogenations up to 250 psi
- Substituted Boronic Acids - Suzuki Coupling reactions
- Phosphorus chemistry ( $\text{PCl}_3$ , etc.)
- Pyrophoric/water reactive/oxygen sensitive materials
- Friedel-Crafts Reaction
- Biomass Extractions / Leaching

A global supplier of specialty chemicals,  
toll and custom manufacturing services.





## Product Portfolio

- Boronic Acids, Grignards, Organolithiums, Organophosphines, and related intermediates
- 300+ materials developed & manufactured
- Grams – Kilos – Metric-ton Scale-up

A global supplier of specialty chemicals,  
toll and custom manufacturing services.





## Analytical Services

- Full service Analytical Lab for method development, raw material and final product release at both sites
- Analytical Equipment:
  - GC, GC – MS, HPLC, ICP-MS, XRD, FTIR, UV-VIS, Karl Fischer
  - Outside Lab Services for NMR, DSC, and TGA:
    - University of Pittsburgh & Vanderbilt University
  - ARSST – Advanced Reactive System Screening Tool:
    - Critical Process Safety Parameters
    - Heat of Reaction, Thermal Decomposition
    - Reaction calorimetry





## Health, Safety & Environment

- OSHA 1910: Process Safety Management Compliant
- Fully implemented Behavioral Based Safety program (DuPont STOP®)
- SOCMA ChemStewards Tier III Excellence company
- Ecovadis: Silver Sustainability Rating: 2021 - 2024  
Bronze Sustainability Rating: Dec 2024 - 2025



A global supplier of specialty chemicals,  
toll and custom manufacturing services.





## Pilot Plant - Douglas

- 50 – 1000 Gallon Reactors:
  - Glass-lined and Stainless Steel
  - Temperature Range: -80 to 250°C
  - Pressure: 0 to 180 psi
- Isolation/Filtration:
  - 2.0 m<sup>2</sup> Hastelloy Rosenmund® filter/dryer
  - Filter press
  - 0.2 m<sup>2</sup> Buchner filter
- Dryers:
  - 70ft<sup>3</sup> Double cone dryer
  - Ribbon Dryer, jacketed and vacuum-rated
  - Littleford Plow Dryer, jacketed and vacuum-rated
  - Vacuum Tray



A global supplier of specialty chemicals,  
toll and custom manufacturing services.





## Commercial Plant - Douglas

- ~100,000 Gallon Reactor Capacity:
  - 2000 – 5000 Gallon: Hastelloy, Glass, Stainless Steel
  - Temperature: 0 to 250°C
  - Pressure: 0 to 250 psi
- Isolation/Filtration:
  - Zwag Filters, Solid Bowl, Basket & Disk Centrifuges
  - Filter Presses
- Dryers:
  - Glass-lined & Hastelloy Double Cone
  - Rotary & Process-All Plow Dryer
  - Pan Dryer
- Fractional Distillation:
  - Solvent recovery/recycle
  - 36 in. diameter column & 12 in. diameter



A global supplier of specialty chemicals,  
toll and custom manufacturing services.



## Commercial Plant - Belle

- Former DuPont Site
- Acquired two production facilities in 2015
- Shared utilities via Chemours
- Access to rail & barge access for raw material & finished goods transport
- On-site industrial waste-water treatment plant
- Delta V Distributed Control System



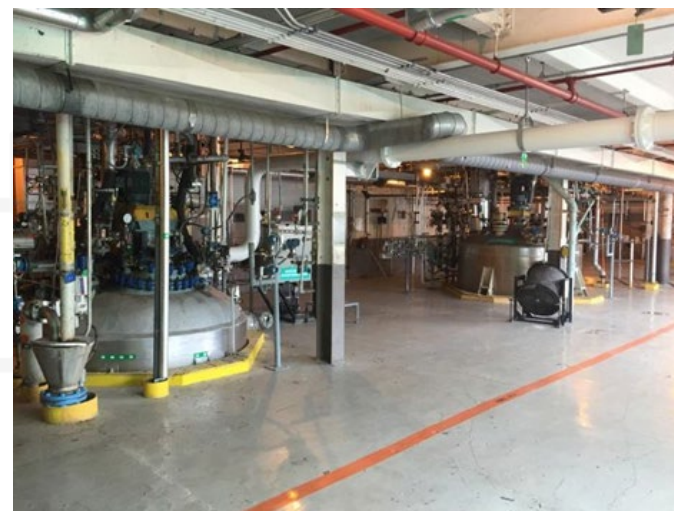
A global supplier of specialty chemicals,  
toll and custom manufacturing services.





## Commercial Plant - Belle

- ~30,000 Gallon Reactor Capacity:
  - 500 – 4000 Gallon: Hastelloy, Glass, Stainless Steel
  - Temperature: -29 to 250°C
  - Pressure: 0 to 100 psi
- Isolation/Filtration:
  - Hastelloy & Stainless Basket Centrifuges
  - Stainless Filter Housing w/ 18 bags
  - Rosenmund Filter Dryer
- Dryers:
  - 2000-gallon Hastelloy Filter dryer
  - Hastelloy Paddle Dryer – 1200 gallon



A global supplier of specialty chemicals,  
toll and custom manufacturing services.





## Capacity & Capability Expansions

- **\$30 Million CAPEX Spend from 2022-2025**
- **Support Customer Growth, Rebuild, and Future Demands**
- **Douglas, GA Site:**
  - 2 x 5000-gallon SS pressure reactors
  - Additional centrifuge capacity
  - Pilot Plant expansion w/ air sensitive solids handling
  - Analytical Lab upgrades
- **Belle, WV Site:**
  - 2 x 4000-gallon SS & 750-gallon GL reactors
  - 5 m<sup>2</sup> Nutsche Filter Dryer
  - 48" Basket Centrifuge

A global supplier of specialty chemicals,  
toll and custom manufacturing services.





# Please visit us at booth #402

## [www.optimachem.com](http://www.optimachem.com)

A global supplier of specialty chemicals,  
toll and custom manufacturing services.

