

Recover more
Worry less

Recovering your precious
metals since 1919

The Hidden Cost of Precious Metal Loss & How to Stop It



 **GANNON & SCOTT**

 **socma**
SOLUTIONS FOR SPECIALTIES

Today's Plan

 **Your world in a refiner's eyes**

 **Shortcuts that cost millions**

 **Many happy returns**

 **Now what**



Recover more

Worry less

How most refiners see you



Recover more

Worry less

How we see you



Chemistry



Processes



Risk



Compliance



Transparency



Recover more

Worry less

Things that hurt



Mixing incompatible streams



Improper segregation



Literally throwing out \$\$




No clear collection spots



Recover more

Worry less



The types of material we get

Recover more

Worry less

Thermal Reduction

Filters, Resins, Wipes, Factory Debris, PPE



Process of "thermally reducing" organic material to a powder.



**What we turn
your material into**

Recover more

Worry less

Two Products



Recover more

Worry less

How we do it

Recover more

Worry less

Furnaces



Variable Speed Motors to save energy

After Hour Timers Reduce Stress on the grid



Variety of furnaces that can accommodate small or large lots -
processing up to 1200lbs/hr

Recover more

Worry less

Melting

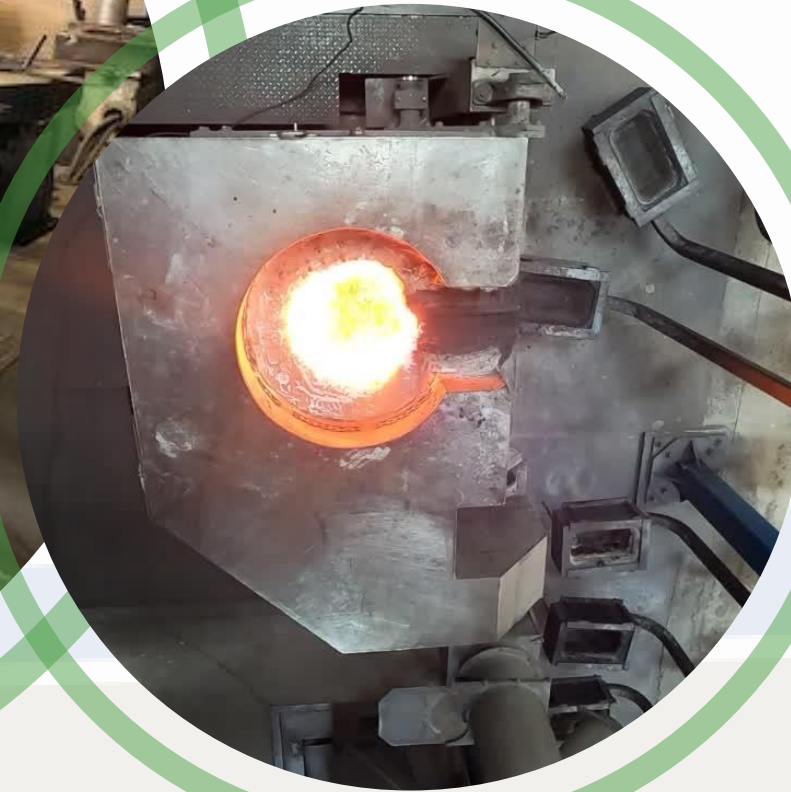
10 lbs to
1-ton



Pop-Up Furnaces



Tilt Furnaces



Recover more

Worry less

Chemical Processing

Cyanides, Acids, Non-Regulated



Zero Discharge Permit

All solutions evaporated & Converted into a product

Reuse & Recycle a majority of our process water

2023 unannounced Haz Waste Inspection



Recover more Worry less

It's not all reclaim

22% of Permitted Volume in 2023

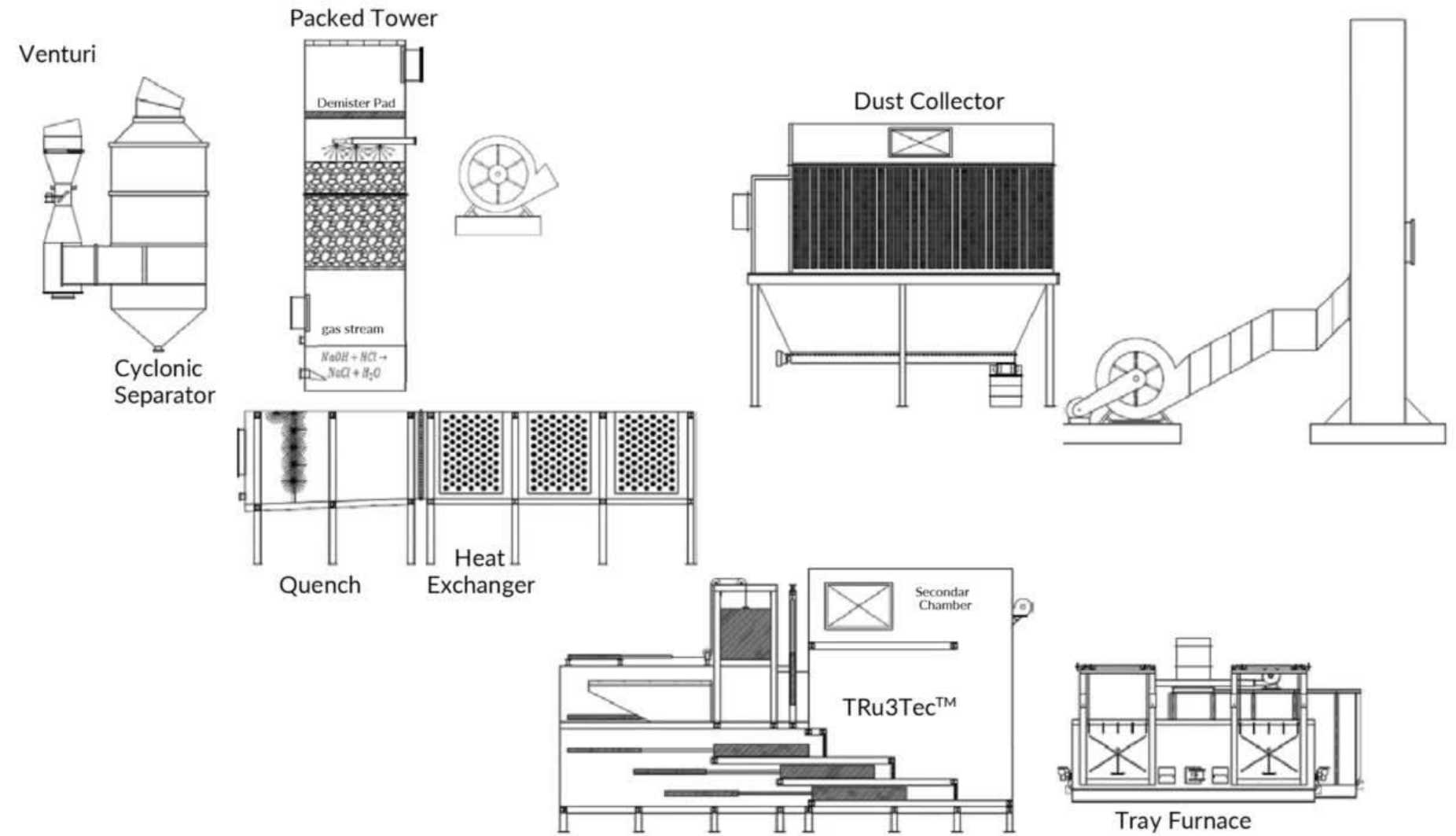
Absolute Minimal Acidic Gases

You're Protected!



TRu3Tec™ Advantage

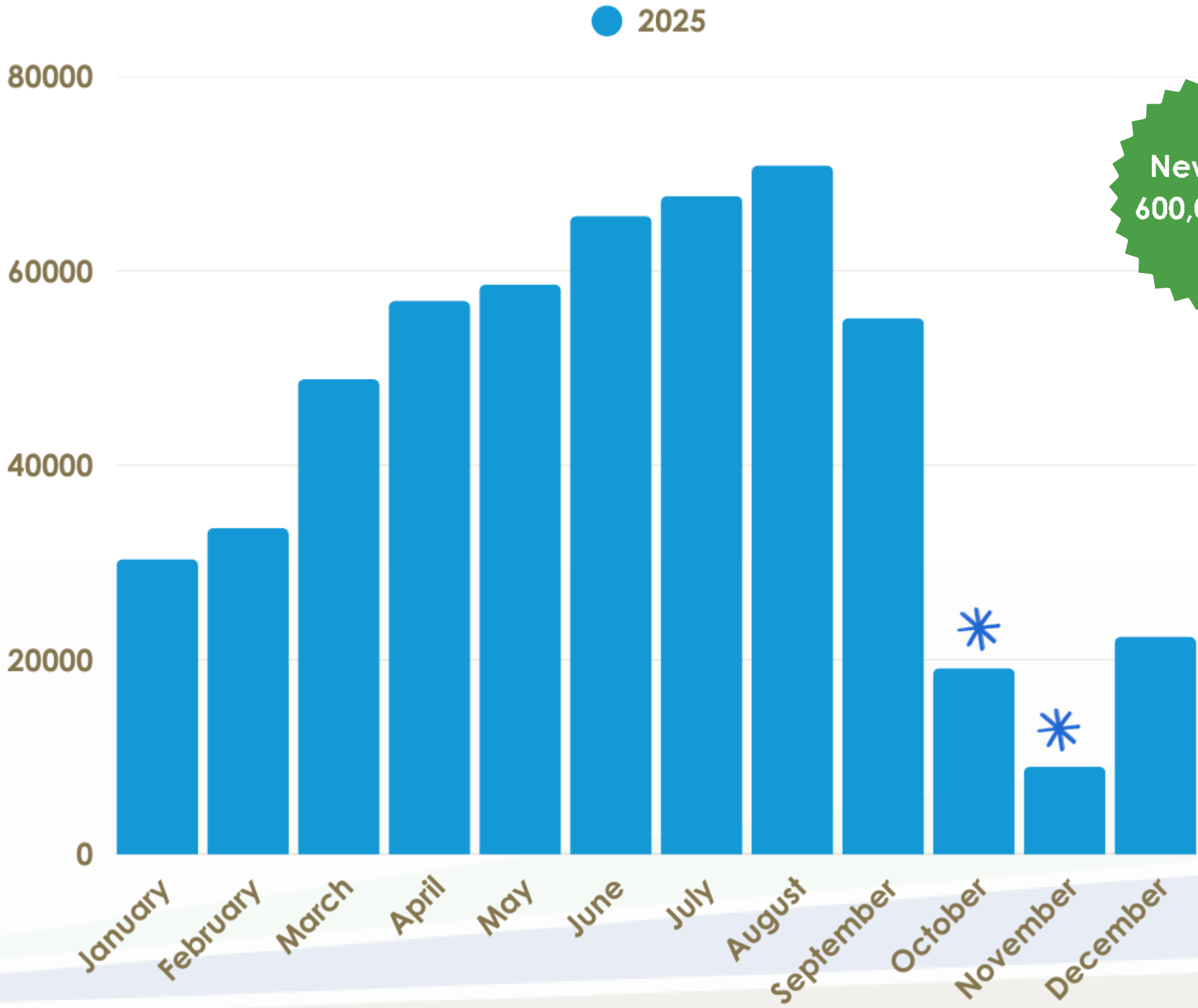
With TRu3Tec™ you don't have to compromise your precious metal recovery.



Recover more

Worry less

Solar Panel Dashboard



Kilowatt hours generated

ESG @ G&S

CORPORATE RESPONSIBILITY

- Environmental**

We are protecting the environment by minimizing discharge at all of our operating facilities. We use the most comprehensive and advanced pollution control systems, and our rooftop solar panels generate renewable energy for a reduced carbon footprint.
- Social**

G&S has received four consecutive "Hire Vets" Gold Medallion Awards and contributes, financially and through volunteer work, to the IPMI, PJC, and other industry and charitable organizations. G&S is committed to providing a fostering environment for employee growth, diversity, to civic, community, educational, and philanthropic institutions.
- Governance**

Gannon & Scott is dedicated to compliance with strict adherence to high ethics, privacy, safety, and security for our customers and employees. Ask us about our "Know Your Customer" policies, and visit our sustainability page to view our ITAR registration, ISO, and other affiliations.

Recover more
Worry less

GANNON & SCOTT
35 Kenney Drive, Cranston, RI 02920 (800) 556-7296 gannon-scott.com

Types of Analysis

Fire Assay:

Widely considered the most accurate technique for gold assay. Very versatile too, high and low-grade metals, sweeps and solutions.

Gravimetric

Wet Chemical Analysis. Works particularly well for Silver and PGM's. Isolates elements so they can be weighed. Provides very accurate values when performed by a skilled chemist.

AA:

Atomic Absorption Spectrometry. Similar to ICP, (+/- 0.01 percent accuracy)

ICP:

Inductively Coupled Plasma. Excellent for Pt & Pd. (+/- 0.001 percent accuracy)

XRF:

X-Ray Fluorescence - Results in minutes, only reads the surface (+/- 0.1 percent accuracy)







ISO 9001
Certified Lab



Recover more

Worry less

Settlement Options

-  **Dollars** - checks will be issued, wire transfers (bank to bank), or ACH payment (clearing house.)
-  **Metal Transfer** - transfer to a supplier or a financial institution.
-  **Metal Return** - various Karat Gold Grain, Gold bars and coins, Fine Silver Grain, Silver Bars and Coins, Sterling Silver Grain are available.
-  **Metal Consignment** - Refined metals may be placed in consignment for sale or return at a future time. There is no charge for this service.

Recover more

Worry less



Tips to capture metal

Recover more

Worry less

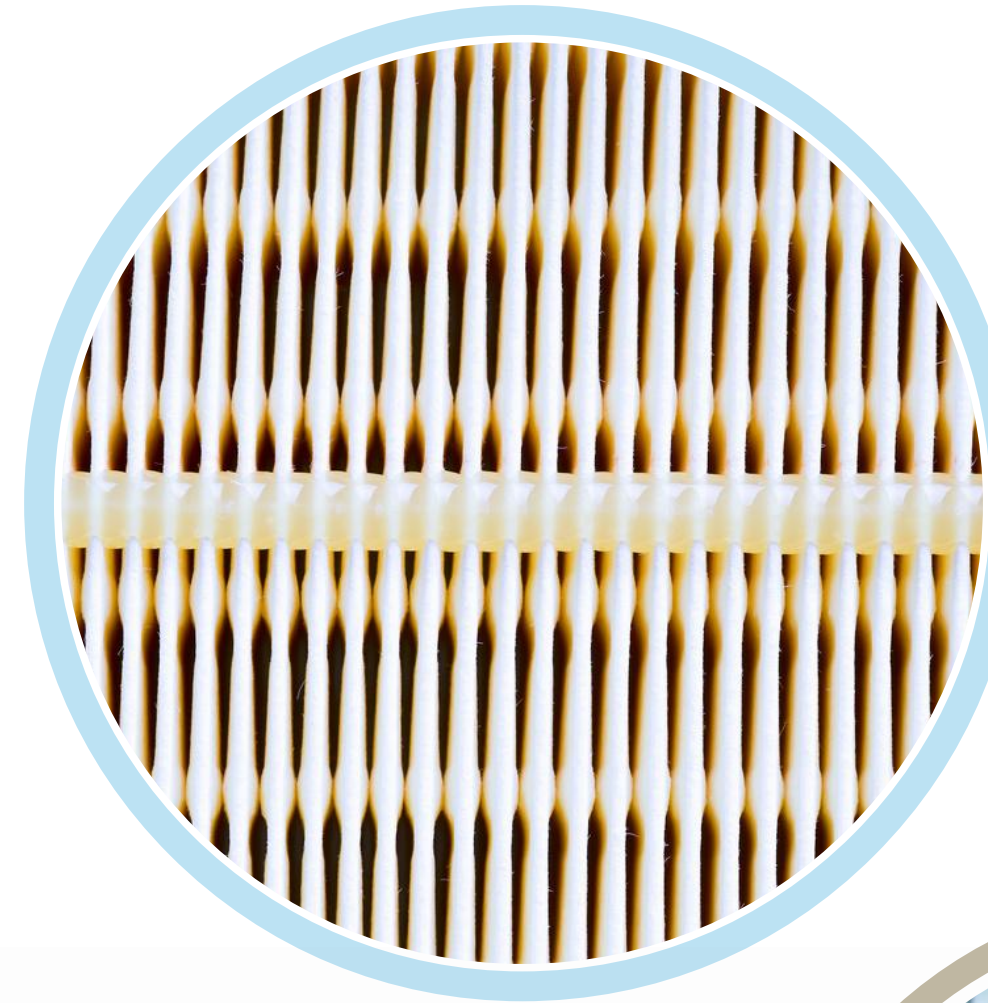
Dust collection tips

Check dust collectors weekly

Maintenance Schedule

Change filters regularly. Inspect the motor and gaskets. Dust on the motor could mean you have a leak.

Clean vents regularly and change canvas bags every two years. It creates a better suction. Regularly clean the screens too.



Sound blanketing material

Sometimes it's glued in fiberglass or another material. Try vacuuming it.

Check the ductwork and piping

Inside and out, metal could be lurking. Wipe them down or contact us to do it for you.



Recover more

Worry less

Flooring tips to capture metal

Cover wooden floors

Install carpets with a natural fiber like wool. The fibers capture metals and can be burned easily. Linoleum is an option too. Seal any cracks in a concrete floor.

Carpet remnants

Place these in areas that produce large quantities of dust.

Steel mesh flooring panels

Particles fall through holes in the floor, allowing for an easy clean-up.

3M sticky floor mats

Place at entrances and exits. The tacky paper captures metal from shoe bottoms.

Mop daily & install a sink trap/filter

Mop every day and empty the dirty water into a sink with a "trap" or a filter cartridge. The filter can be added to a "sweeps" lot for incineration.



Recover more

Worry less



Shipping Tips

Recover more

Worry less

Containers

Metallics

5-gallon metal pails and/or 55-gallon drums with lids and security seals.

General sweeps

Fiber drums (these come in various sizes too.)

Metal drums.

Again, with lids and security seals.

Solutions or liquids

Approved US DOT container - ask us if you are unsure.

- ~Containers must be serviceable.
- ~Solution Drums should be dry before picking up.
- ~Put plastic liners inside pails and drums for oily metallics, sweeps and/or filters.
- ~filters do not need to be dry.
- ~For LTL shipments, Secure small containers to a pallet with shrink wrap or banding, and attached to the pallet.
- ~We recommend pallet sizes to be 40"x48" and in good condition without protruding nails.

Recover more

Worry less

Avoid this

Shipping trash

Try to keep garbage out of sweeps lot. It only adds to the processing fees and can lower the value of the material.

Wimpy packaging

Ziplock bags, or cardboard packaging can be easily damaged

Overloading containers

Weight could be an issue for simply moving in your factory
Also - contents could spill in transit

Stacking non-stackable pallets

Risk damage to both pallets

Revealing the contents

Don't write anything that could reveal the value of the content.
Put the paperwork for the lots, in the containers.

Remove/block out any pre-existing labels and other markups

This can prevent confusion and other problems

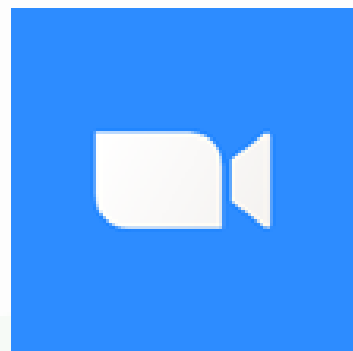


Recover more

Worry less

Visit or witness

In person or
virtually



Recover more

Worry less

Questions, comments?



Recover more

Worry less

Thank you

John Antonacci

e: JohnAntonacci@gannon-scott.com

p: (800) 556-7296 xt: 1170

