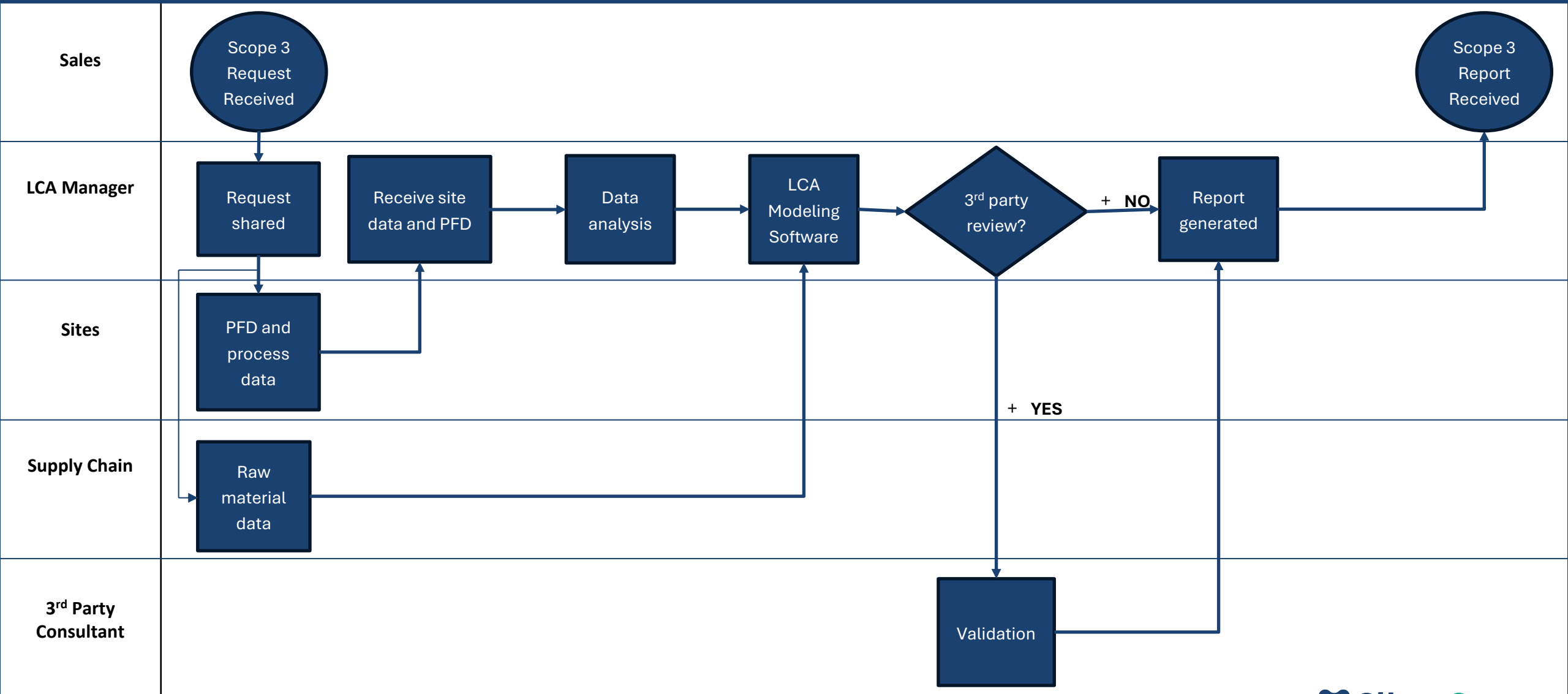




**Responding to external data requests:
challenges & lessons learned**

SOCMA Sustainability Workshop 2026

LCA Request Work Process



Life Cycle Analysis Results – Product A

LCA Framework:	Cradle-to-gate
Functional Unit:	1 kg of product
Data Source:	Primary data – process and raw material data encompassing 2025 production data. Secondary data – GaBi database V. 10.9.4.13, Schema 8007.
Allocation	Mass allocation
Cut-off Criteria:	Upstream activities 3.6, 3.7, and 3.8 were excluded from calculation

Product Description:

Product A is produced via a catalytic reaction of raw material 1 and raw material 2, followed by fractional distillation of the prime product (Product A) and heavy bottoms material. Product A is typically used in a variety of industries with a range of applications.

Total PCF excl. Biogenic Emissions:	3.49	kg CO ₂ e/kg product
Total PCF incl. Biogenic Emissions:	3.54	kg CO ₂ e/kg product
Total Carbon Content:	0.62	kg C/kg product
Total Biogenic Carbon Content:	0.15	kg C/kg product

ESG Data Requests

How are Sustainability Data Requests Handled

- Emailed
- Centralized System

Prioritization

Track Responses

- Manual (Excel)

3rd Party Platforms

- Supplier Assurance

Our Challenges

- Surprises
- Immediate Response

5 Commonly Faced Challenges

- 1. Prioritize:** How are your customers using PCFs— for reporting, supplier ranking, or procurement decisions? Does that usage inform how you prioritize?
- 2. Anticipate:** Has anyone successfully anticipated PCF or sustainability requests before customers asked? How to move from reactive to proactive?
- 3. Engage:** How do you secure the time and support of internal stakeholders?
- 4. Streamline:** How have firms minimized the time/effort required for PCFs to deliver results quickly with limited resources?
- 5. Re-direct:** Have you ever pushed back on a customer’s sustainability or PCF request? What did that look like?

THANK YOU!

